



Advanced Endoscopy: Interesting Case Presentations

Thomas J Savides MD

Distinguished Professor of Clinical Medicine

University of California San Diego

Disclosures

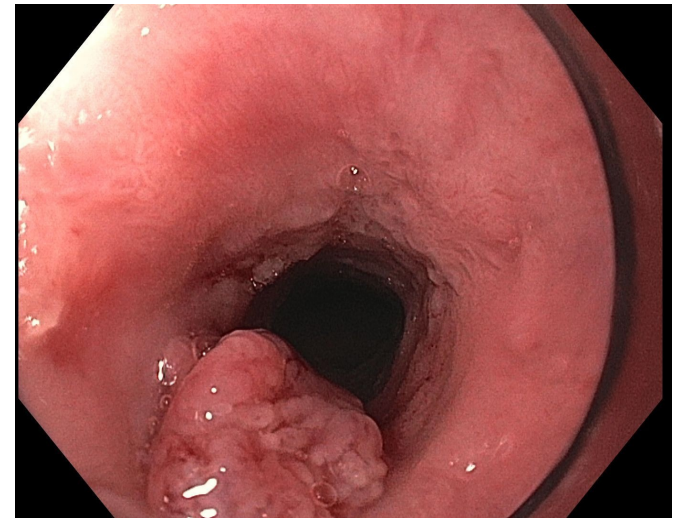
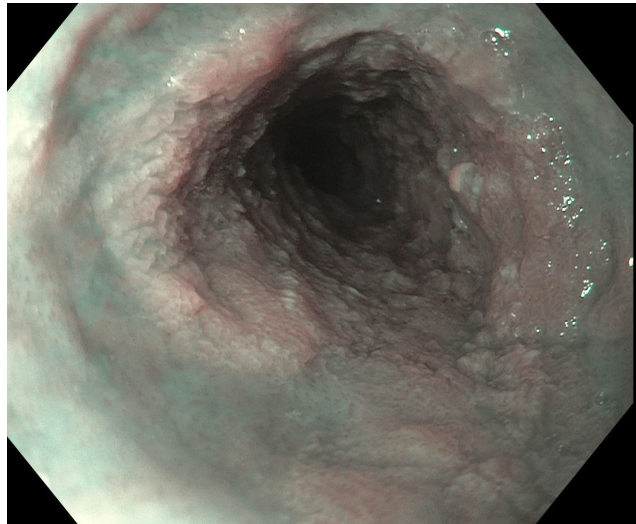
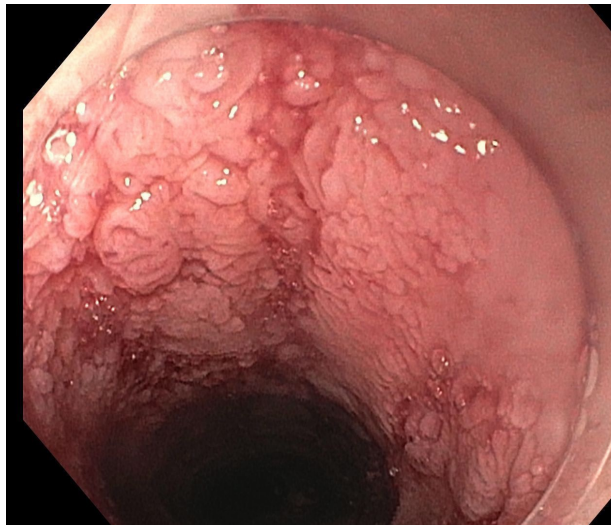
- None

A coastal scene with waves in the foreground and houses on a cliff in the background. The image is overlaid with a semi-transparent blue filter. The text "Esophageal Papillomatosis" is centered in white.

Esophageal Papillomatosis

Esophageal papillomatosis

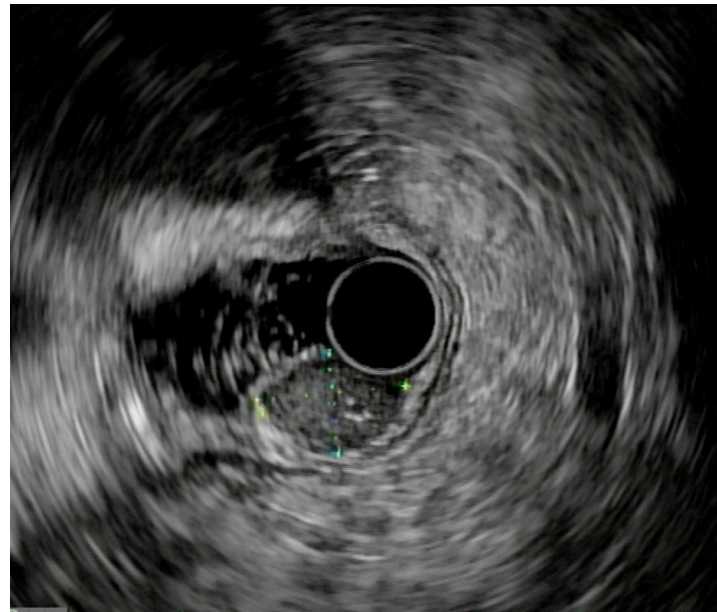
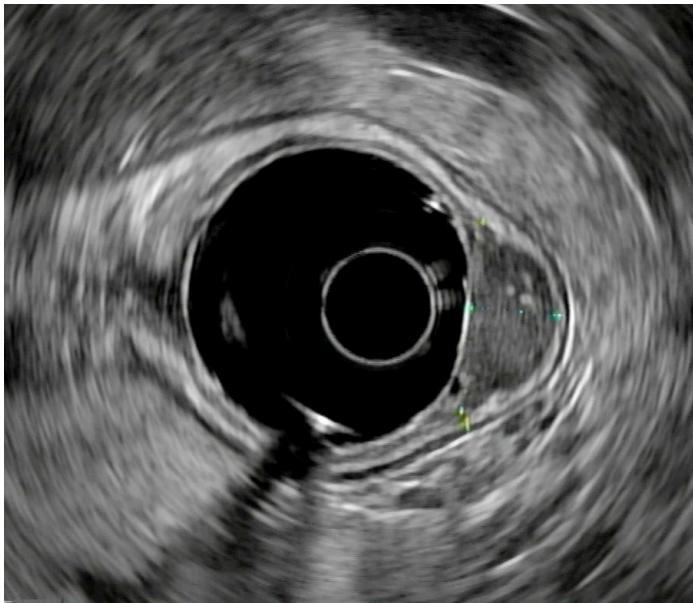
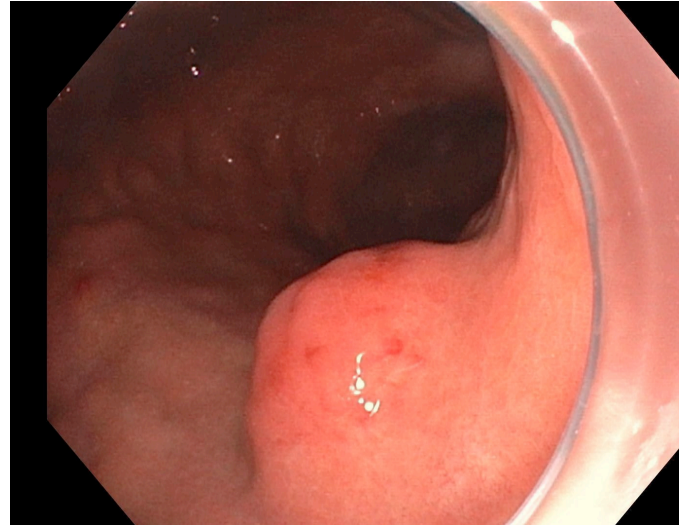
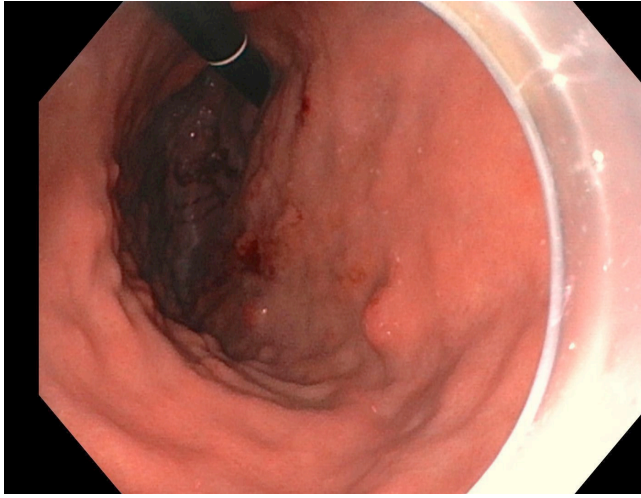
- 78 year old woman with dysphagia
- Prior EGD revealed papillomas in esophagus – EMR then stricture
- Does not want surgery – just surveillance and possible XRT in future



A coastal scene with waves in the foreground and houses on a cliff in the background. The waves are a vibrant blue-green color, crashing and creating white foam. In the background, a cliffside is covered with numerous houses, some with balconies and large windows. A tall palm tree stands out against the clear blue sky. The overall scene is bright and sunny.

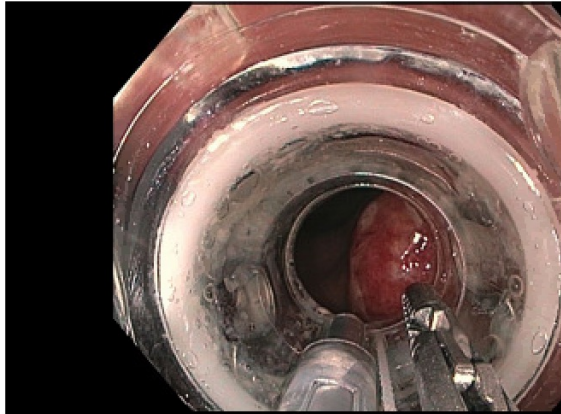
Gastric Carcinoid

51 yo male with 13 mm gastric carcinoid



Endoscopic Full Thickness Resection

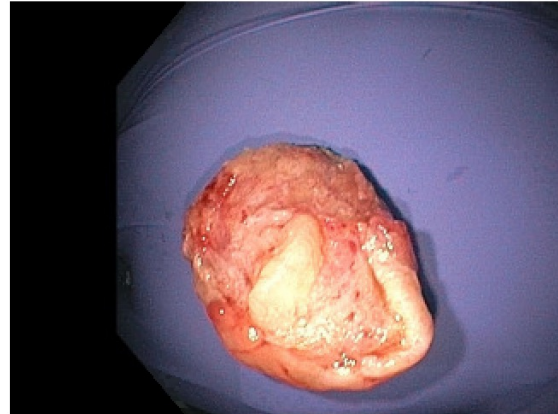
50



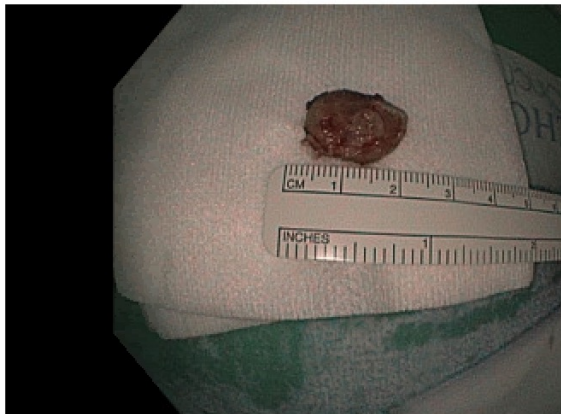
51



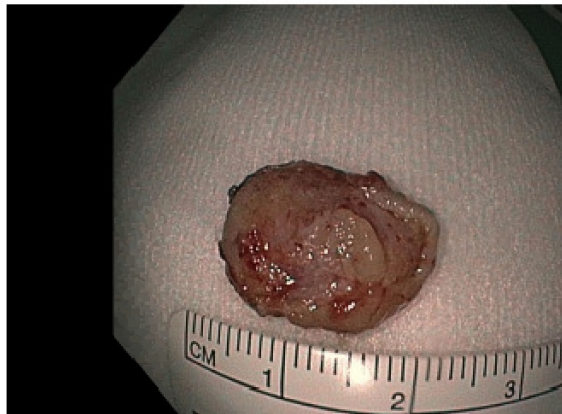
52



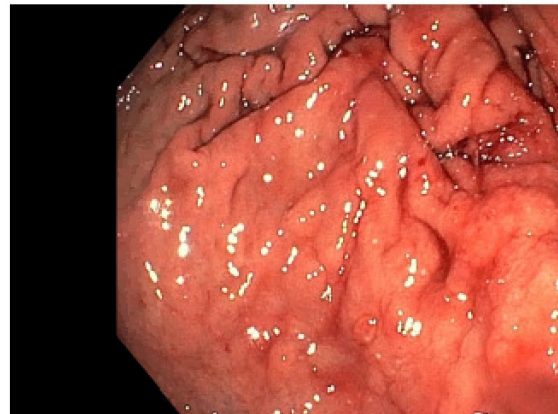
53

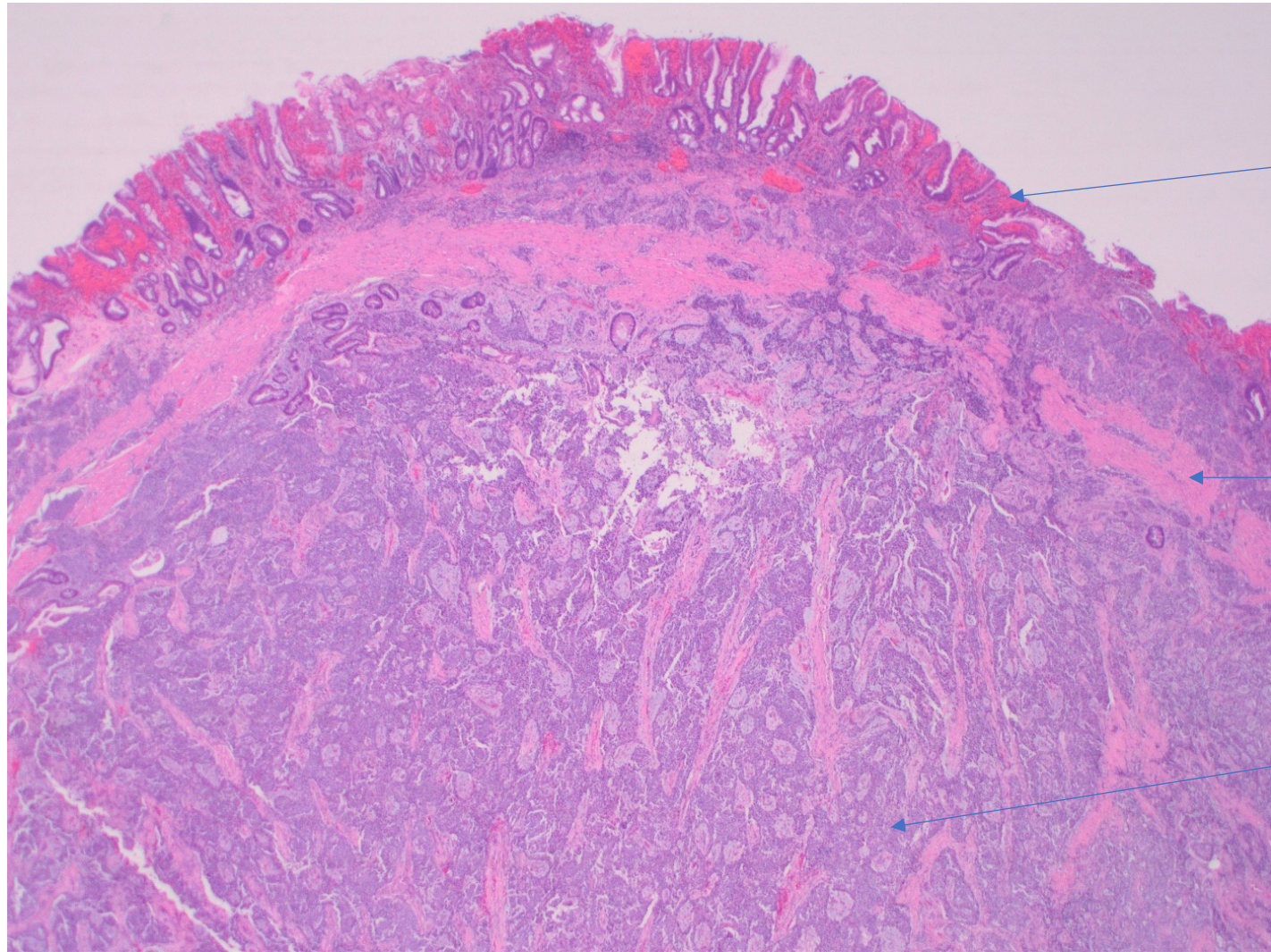


54



55



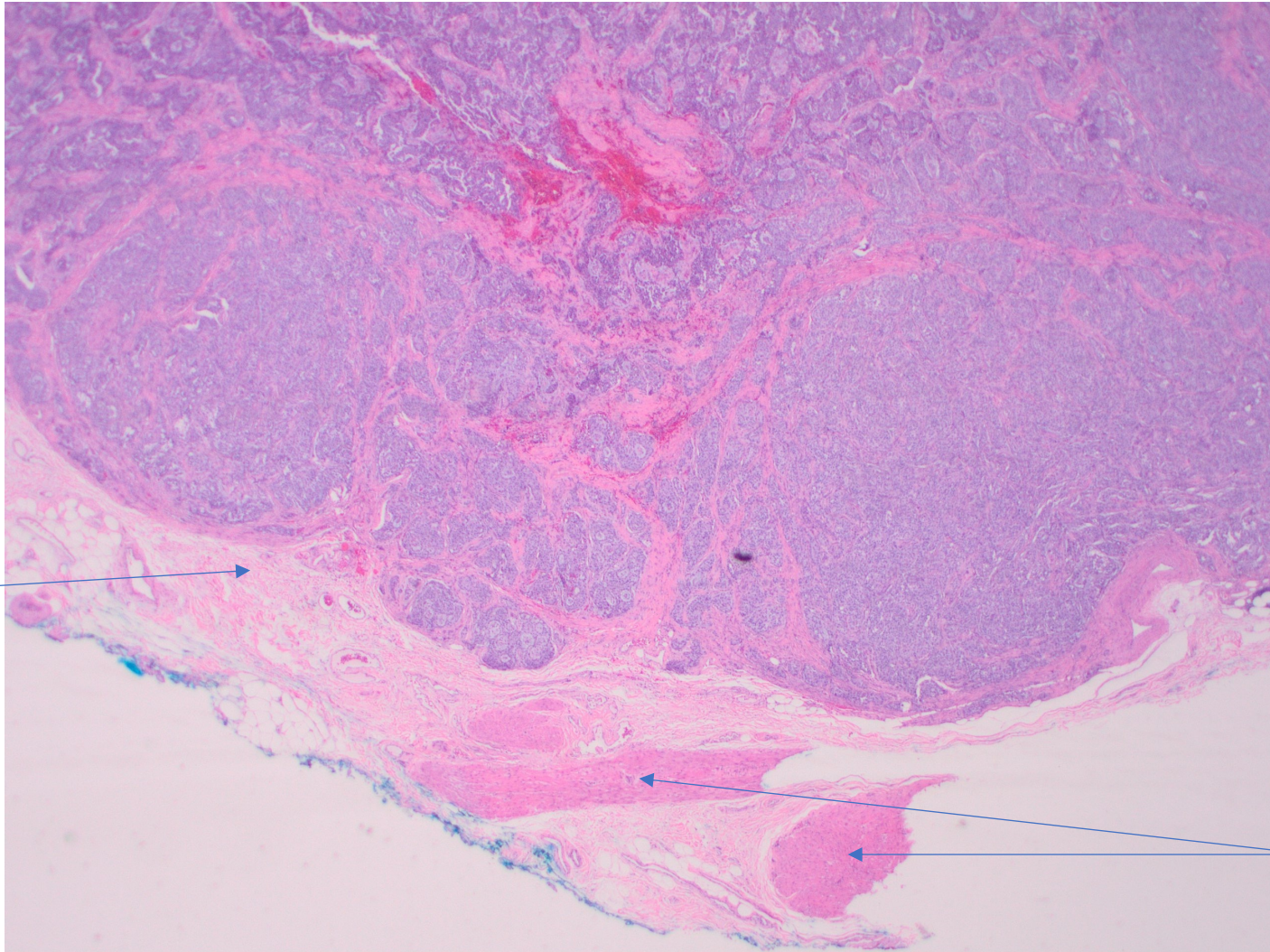


Mucosa

Muscularis mucosae

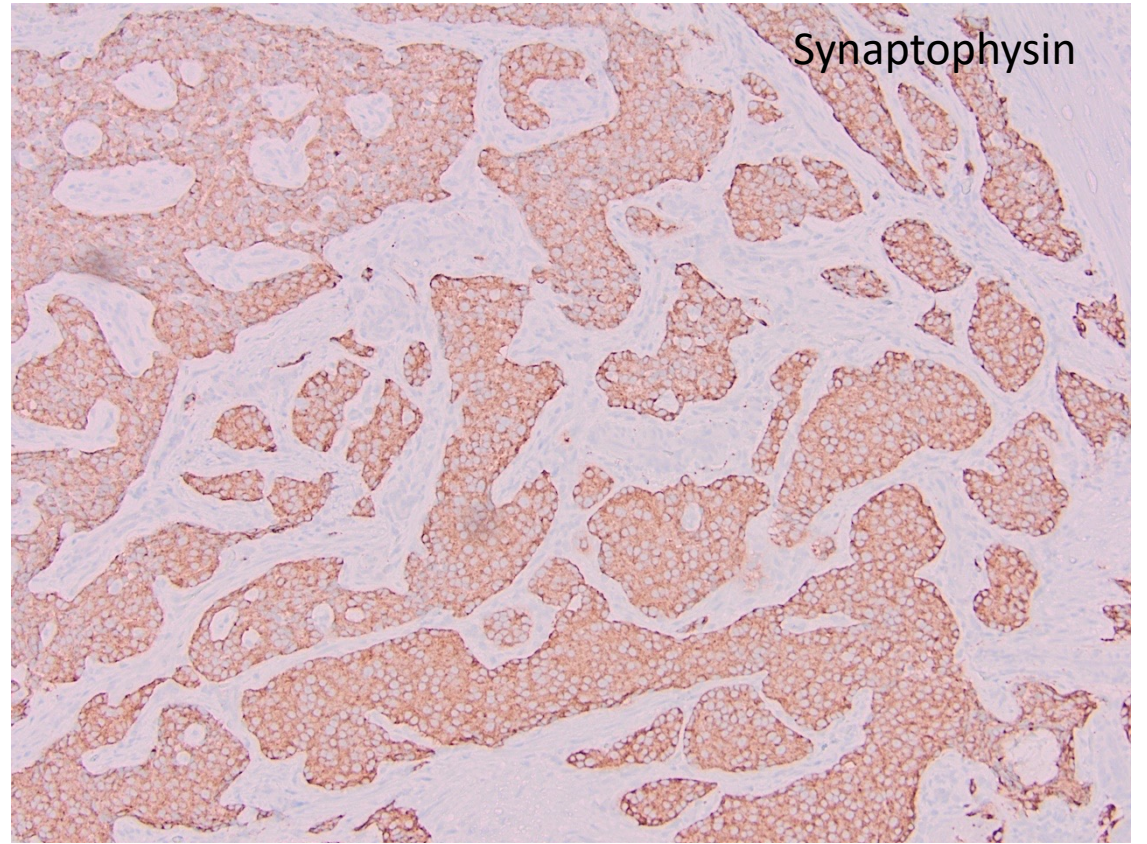
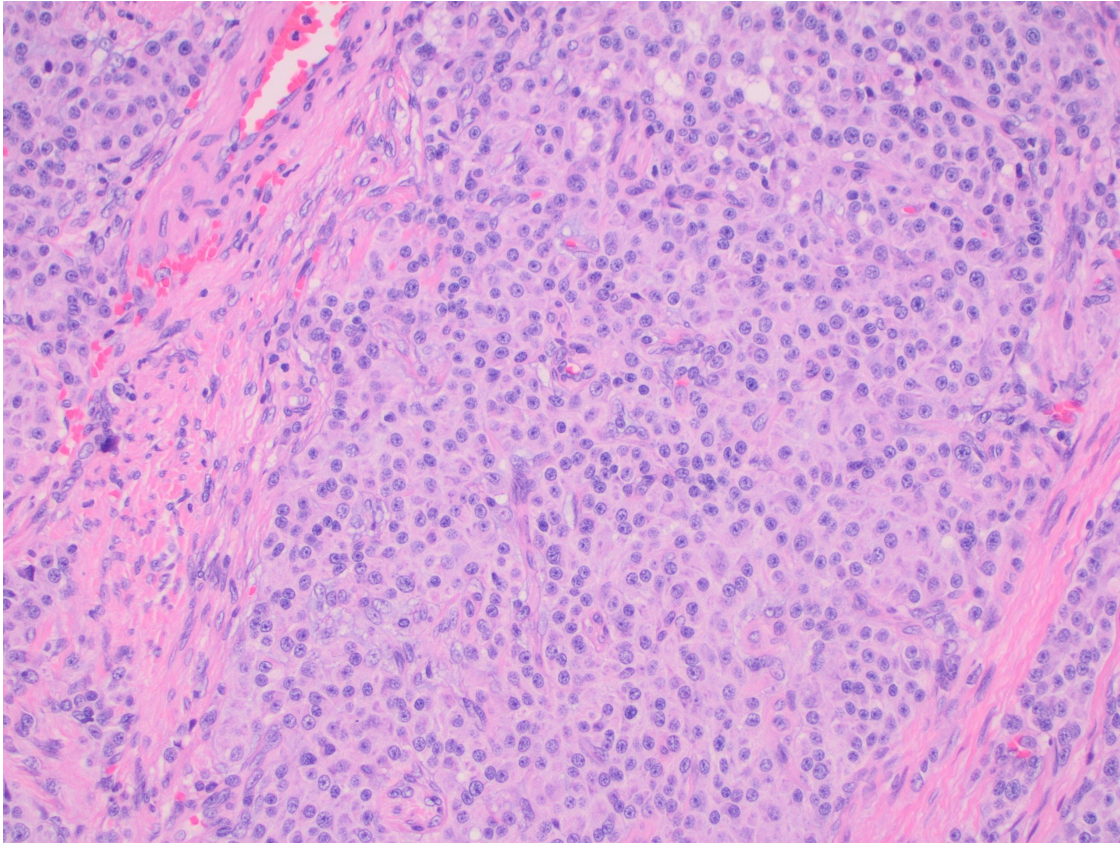
Submucosa

20X magnification



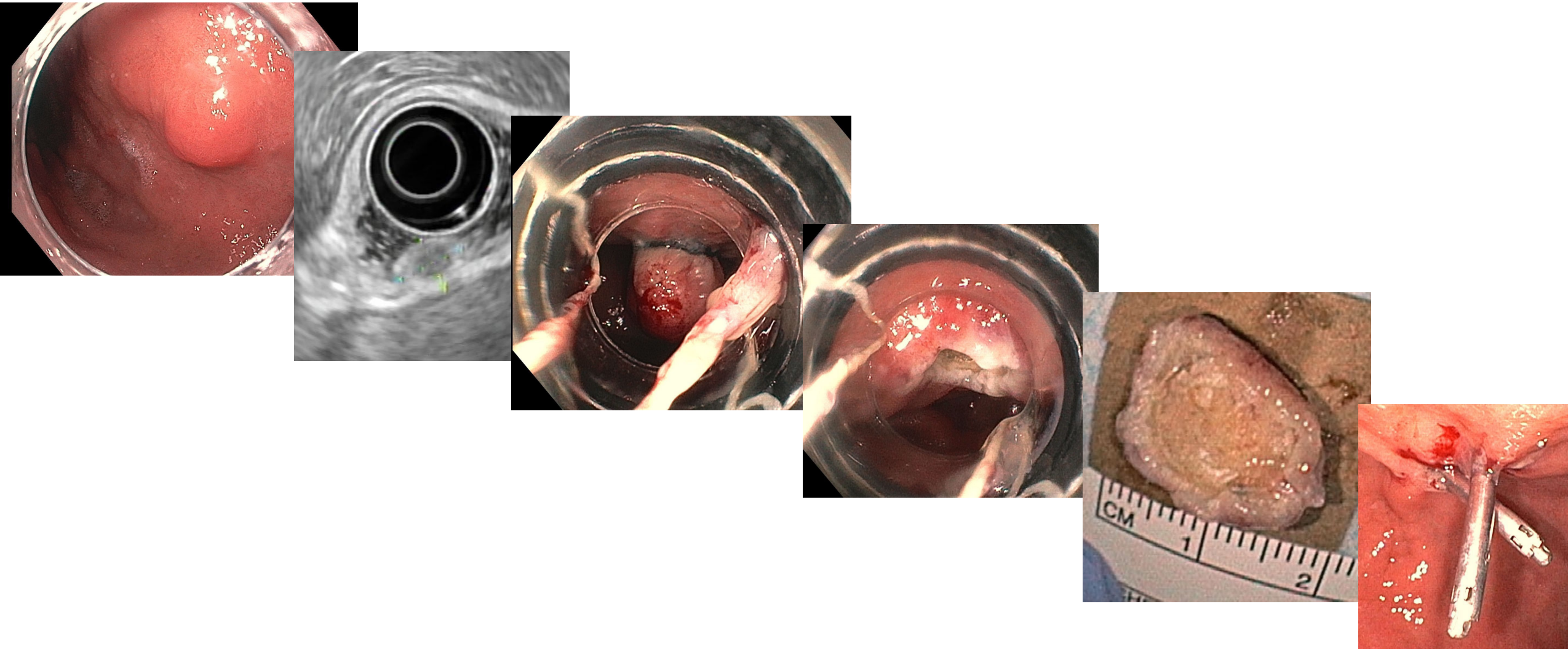
Submucosa

Muscularis propria



Well differentiated neuroendocrine tumor, grade 1

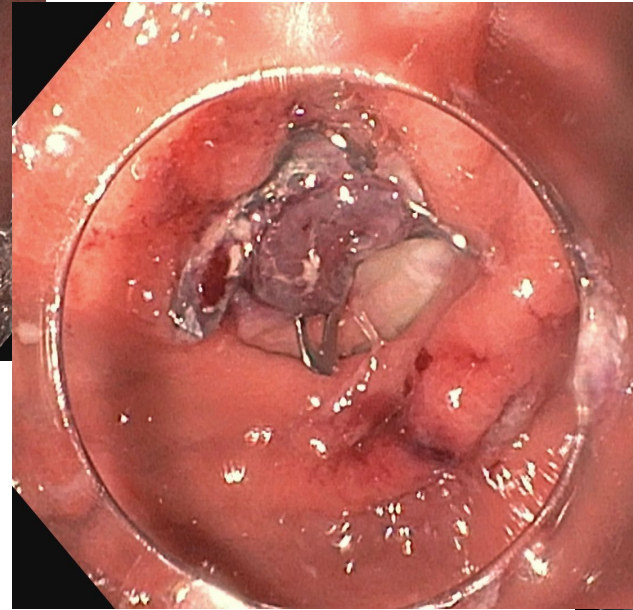
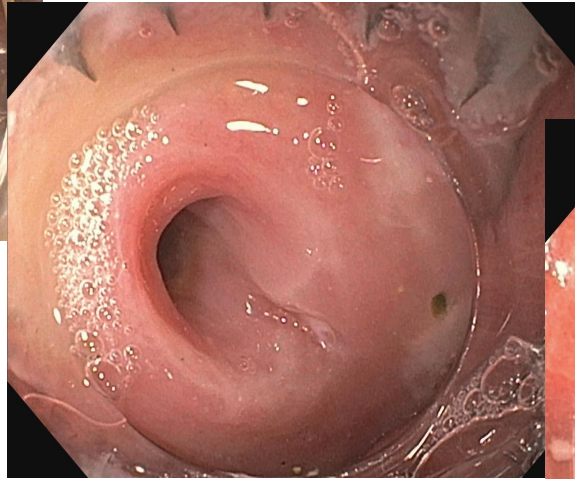
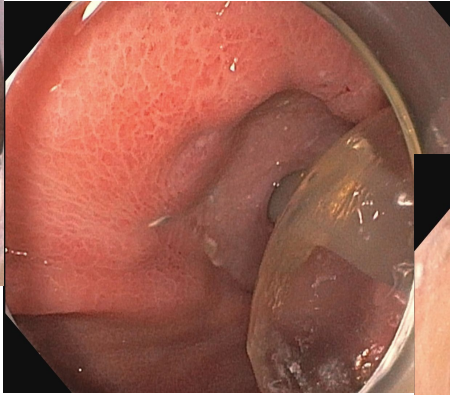
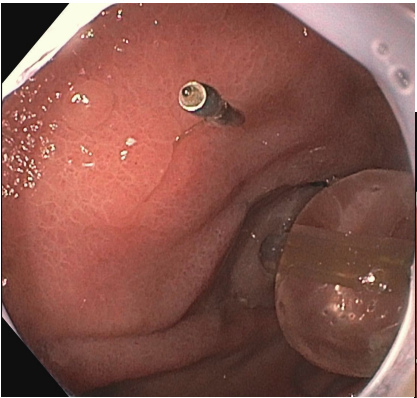
2 years later – 10 mm subepithelial nodule in same area – removed with band ligation snare polypectomy EMR



A coastal scene featuring large, blue waves crashing in the foreground. In the background, a cliffside is covered with numerous houses and buildings, some with balconies. A tall palm tree stands prominently on the cliff. The sky is clear and blue.

Leaking from PEG Site

75 year old woman with leaking PEG tube
Closed with over the scope clip



A coastal scene with waves in the foreground and houses on a cliff in the background. The waves are a vibrant blue-green color, crashing and creating white foam. In the background, a cliffside is covered with numerous houses, some with balconies and large windows. A tall palm tree stands prominently on the cliff. The sky is a clear, deep blue.

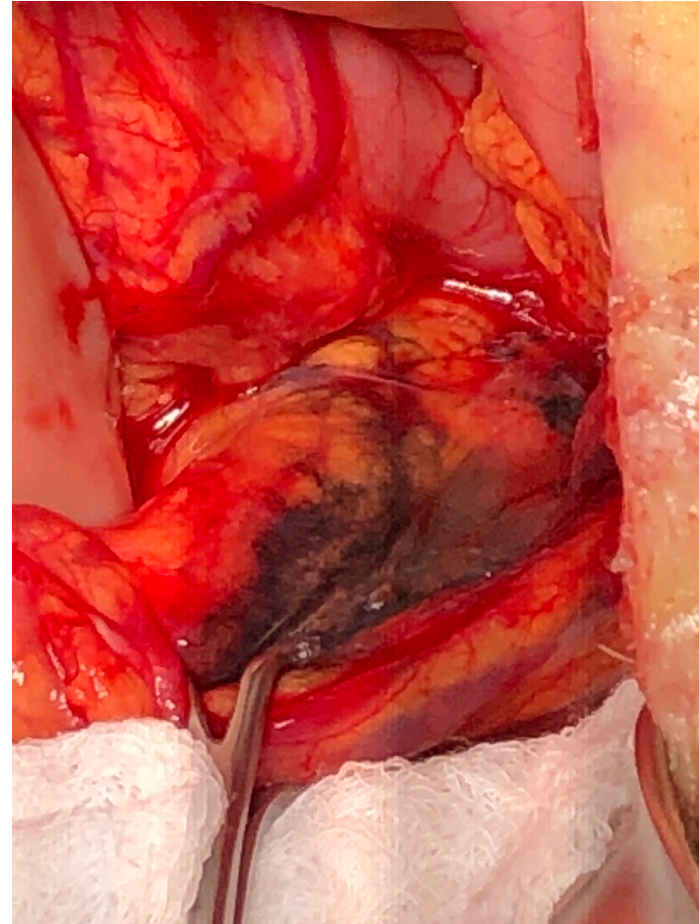
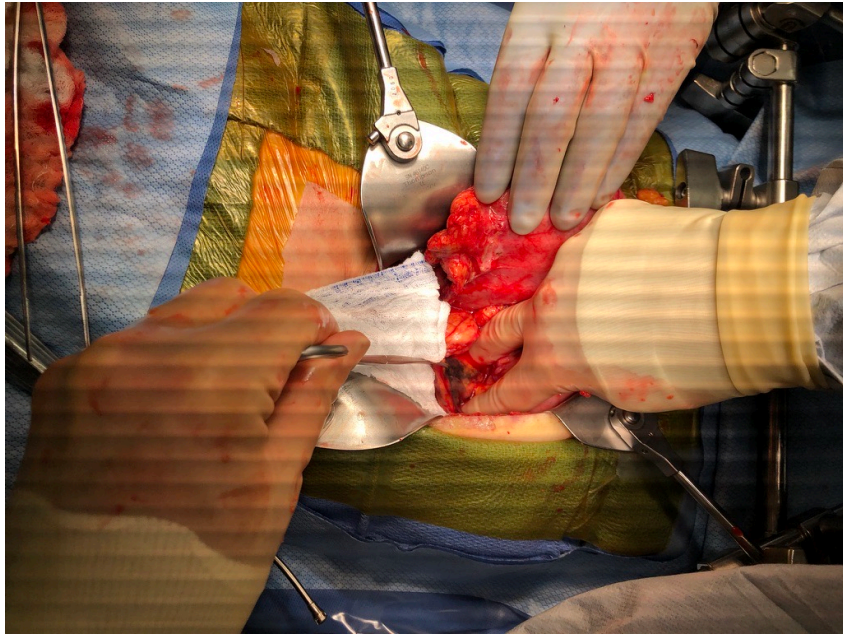
Insulinoma

Diminutive Insulinoma

- 58 yo woman with several months recurrent hypoglycemia
- Insulin levels increased
- CT and MRI normal pancreas
- EUS FNA confirmed 8 mm x6 mm insulinoma tumor



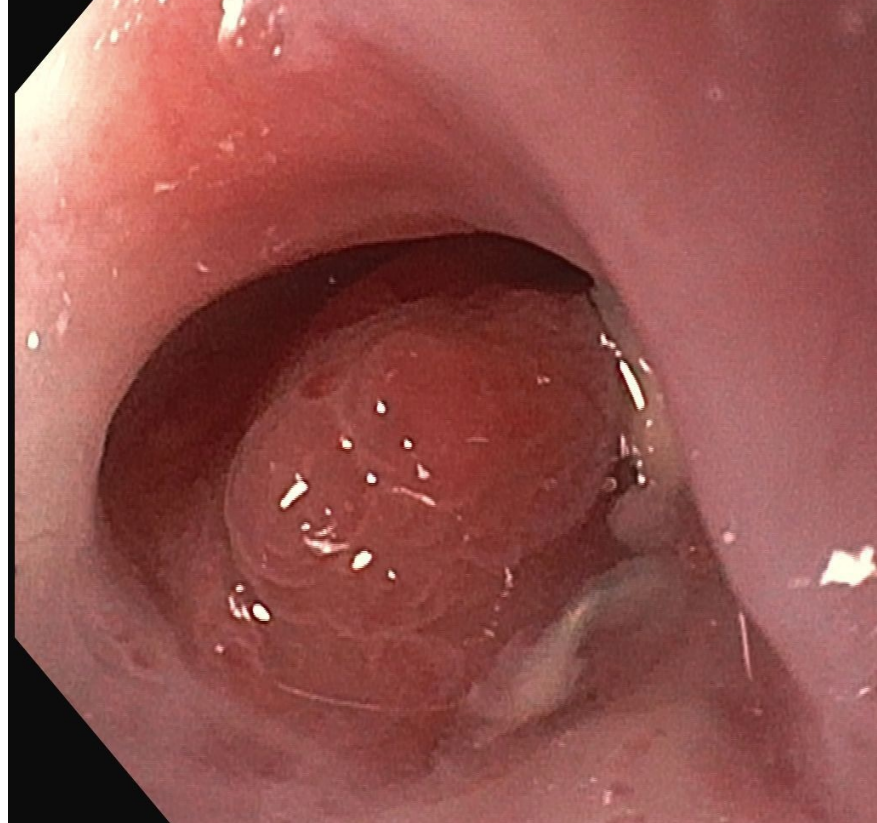
Tattoo placed via EUS FNI to help surgeon find insulinoma for curative resection



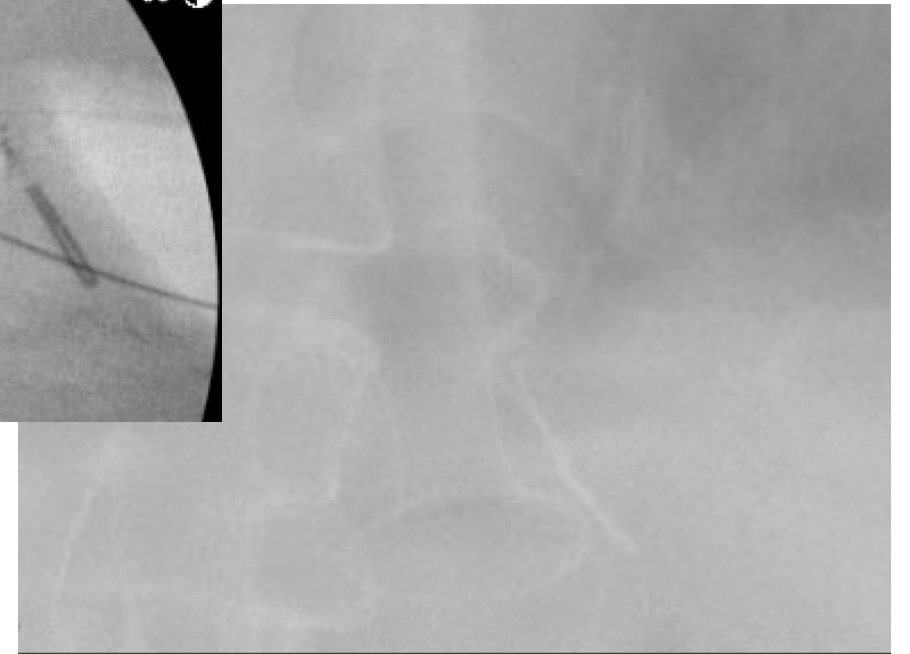
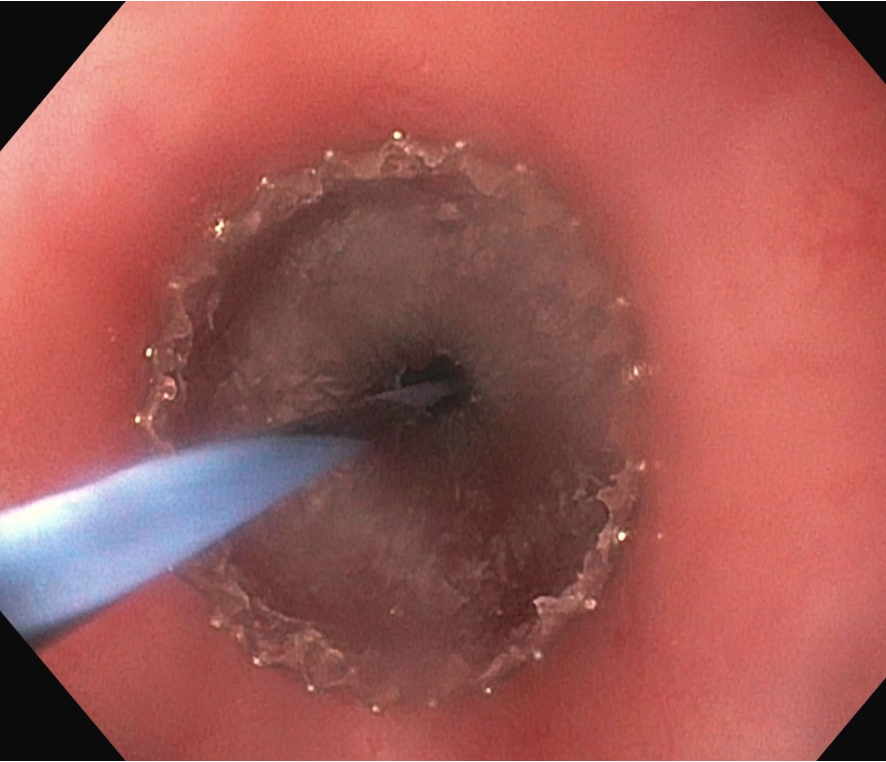
A coastal scene with waves in the foreground and houses on a cliff in the background. The image is overlaid with a semi-transparent blue filter. The text is centered in the middle of the image.

Challenging gastro-jejunal anastomotic stricture

57 yo woman with gastrectomy for signet ring adenocarcinoma now with metastatic disease and stricture or tumor recurrence at gastro-jejunostomy – refractory to endoscopic dilations



20 mm x 10 mm cold LAMS for GJ stricture



A coastal scene with waves in the foreground and houses on a cliff in the background. The image is overlaid with a semi-transparent blue filter. The text is centered in the middle of the image.

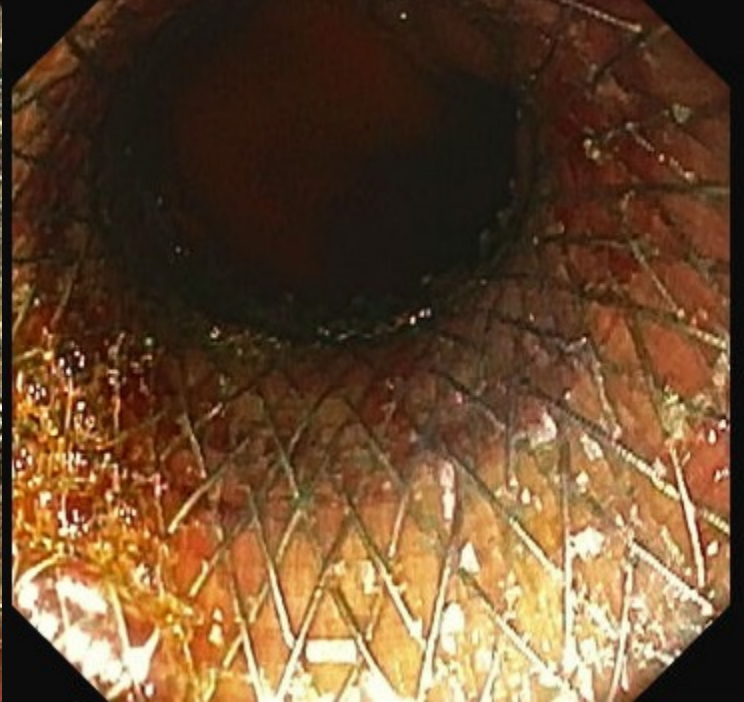
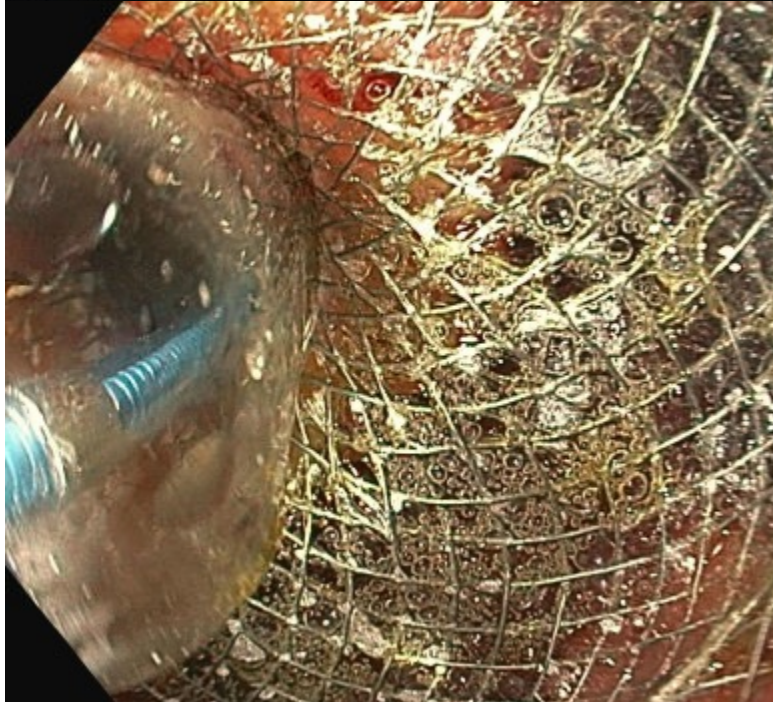
ERCP in Roux-en-Y Gastric Bypass (EDGE Procedure)

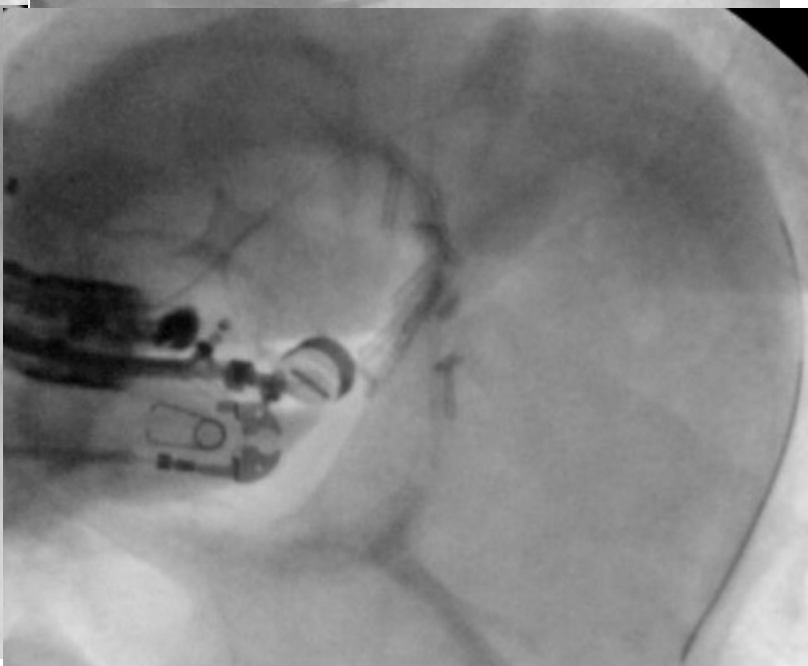
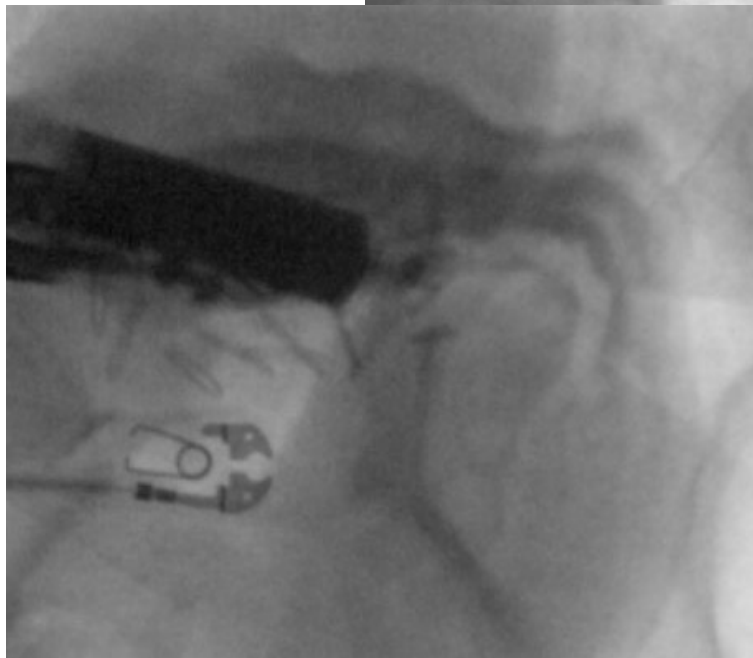
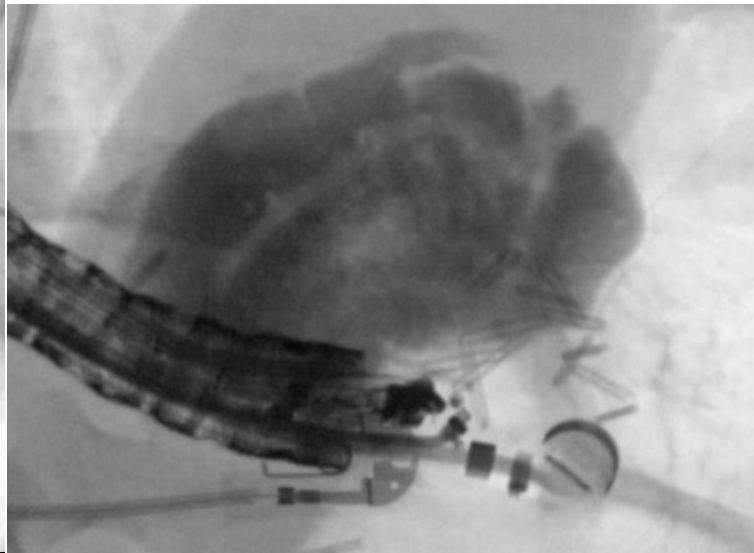
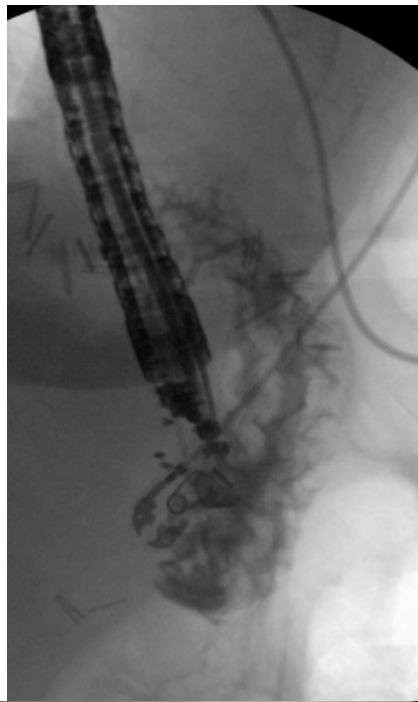
36 yo with RYGB and CBD stone

- 36 year old woman with history of Roux-en-Y gastric bypass, history of perforated anastomotic ulcer (managed surgically), who presents with abdominal pain and elevated LFTs.
- MRCP negative for stone.
- Lap chol with positive IOC for small stone in distal CBD.
- Lap-assisted ERCP unsuccessful due to inability to place port in stomach.

EDGE

- Excluded stomach confirmed with injection and distension with contrast and saline
- Wire passed into the antrum
- Hot Axios 20 mm x 10 mm deployed under endoscopic and fluoroscopic guidance
- CRE dilation 8 mm to 10 mm





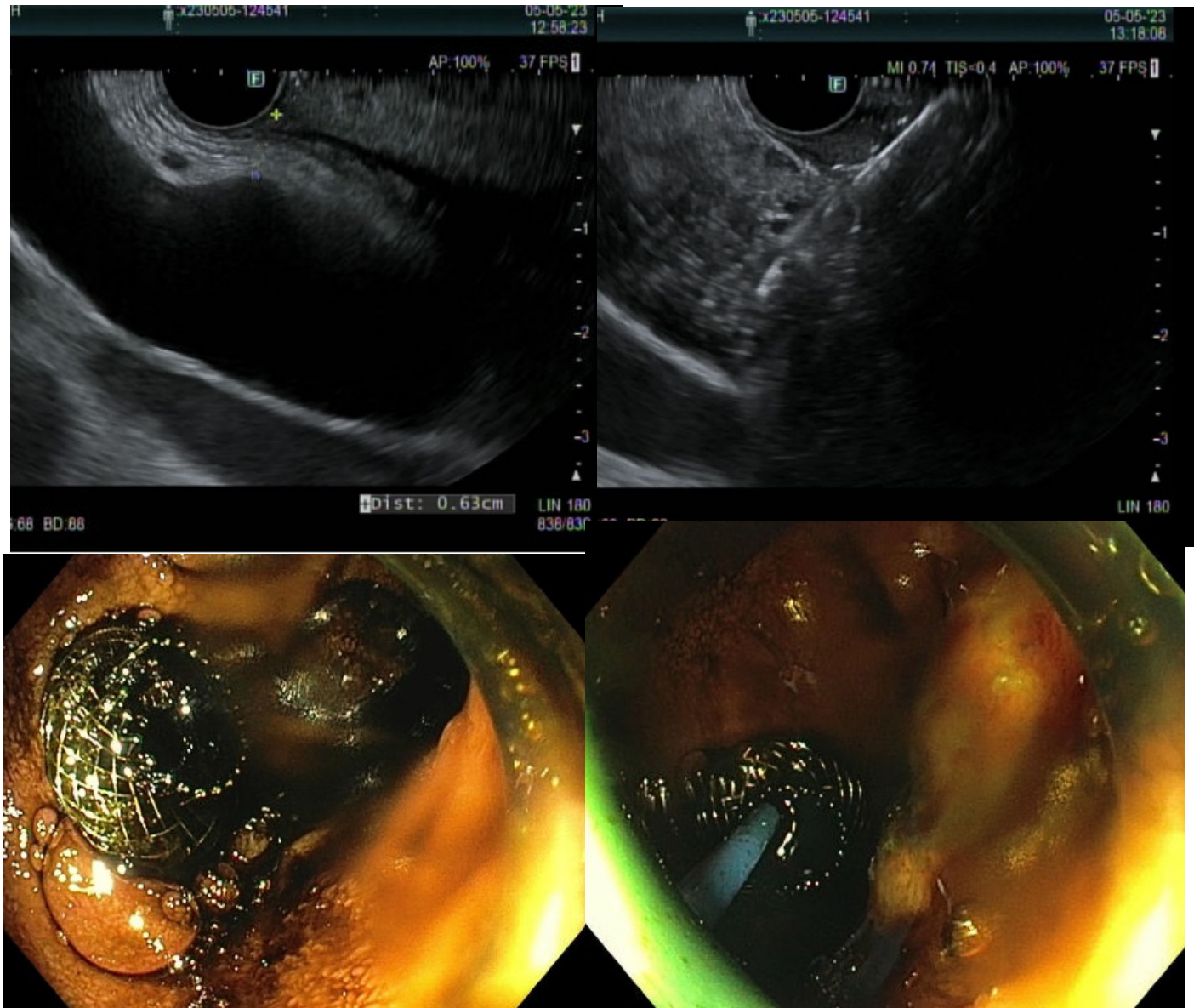
A coastal scene with waves in the foreground and houses on a cliff in the background. The text is overlaid on the image.

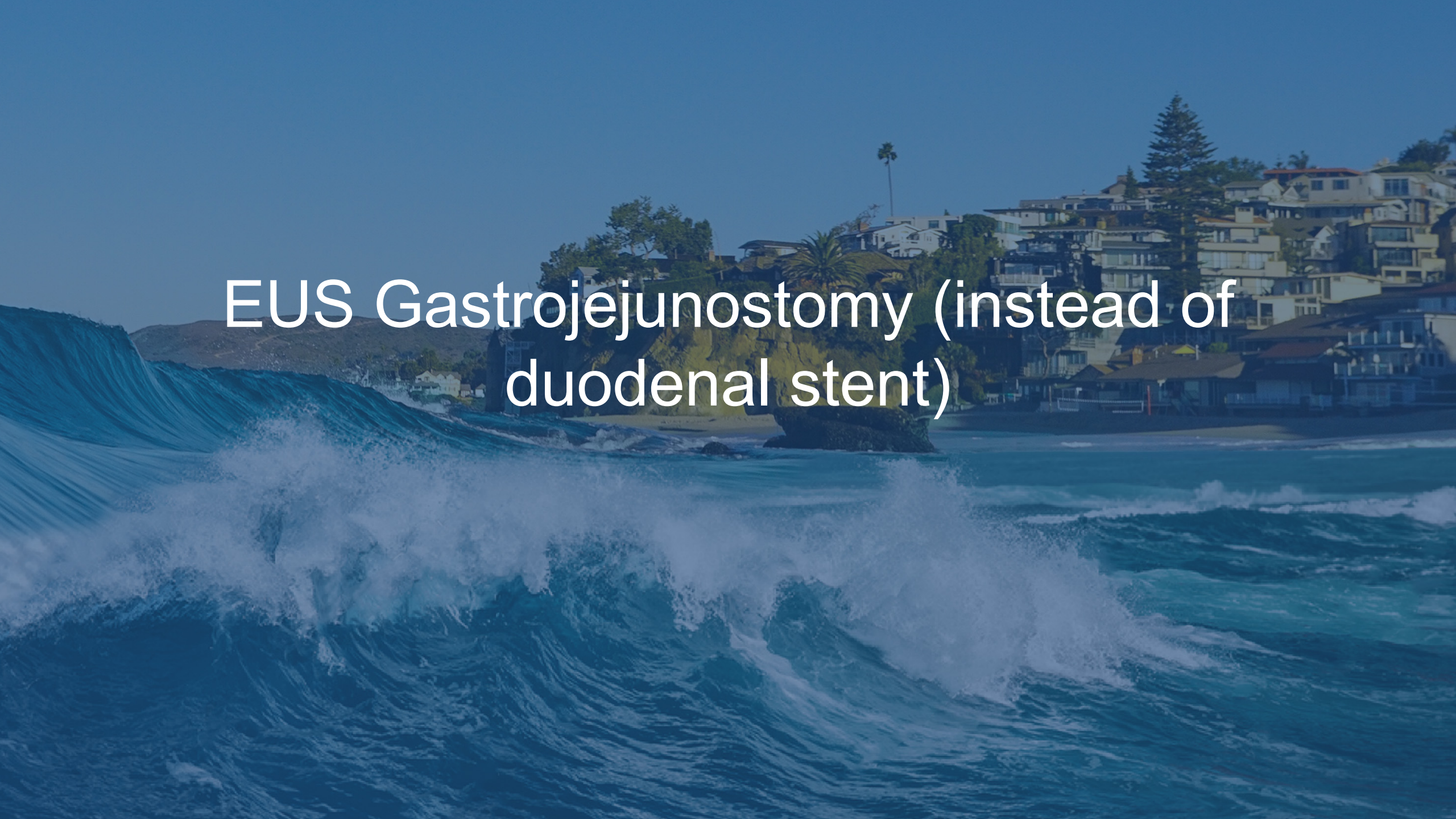
EUS Choledoduodenal LAMS stent
instead of ERCP biliary stent

73 yo woman with pancreatic head cancer and biliary obstruction – unable to cannulate bile duct



EUS LAMS choledochoduodenostomy



A coastal scene with waves in the foreground and houses on a cliff in the background. The text is overlaid on the image.

EUS Gastrojejunostomy (instead of
duodenal stent)

58 yo male with malignant biliary and duodenal obstruction from metastatic colon cancer



Endoscopy Gastrojejunostomy

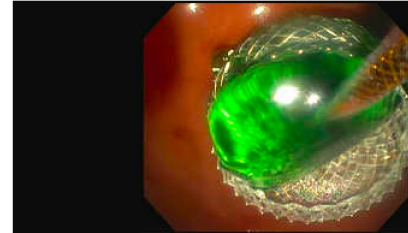
11



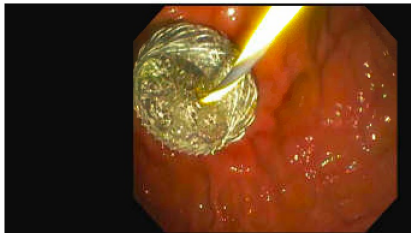
12



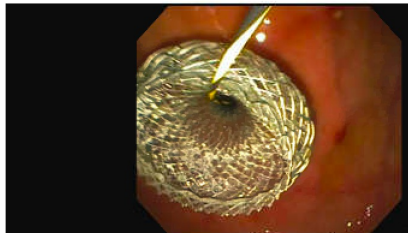
13



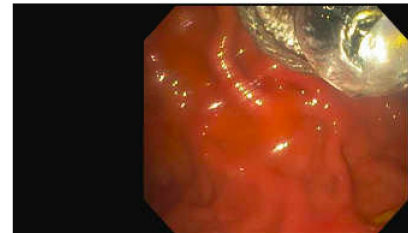
14



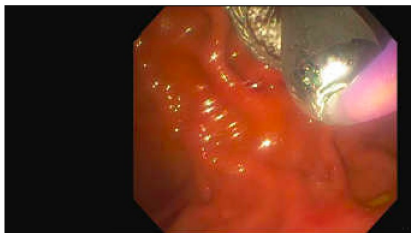
15



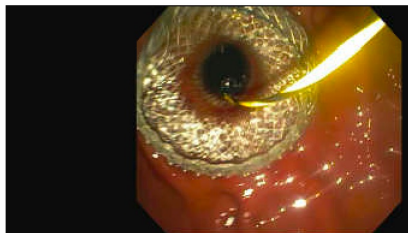
16



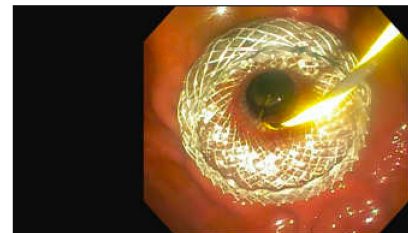
17



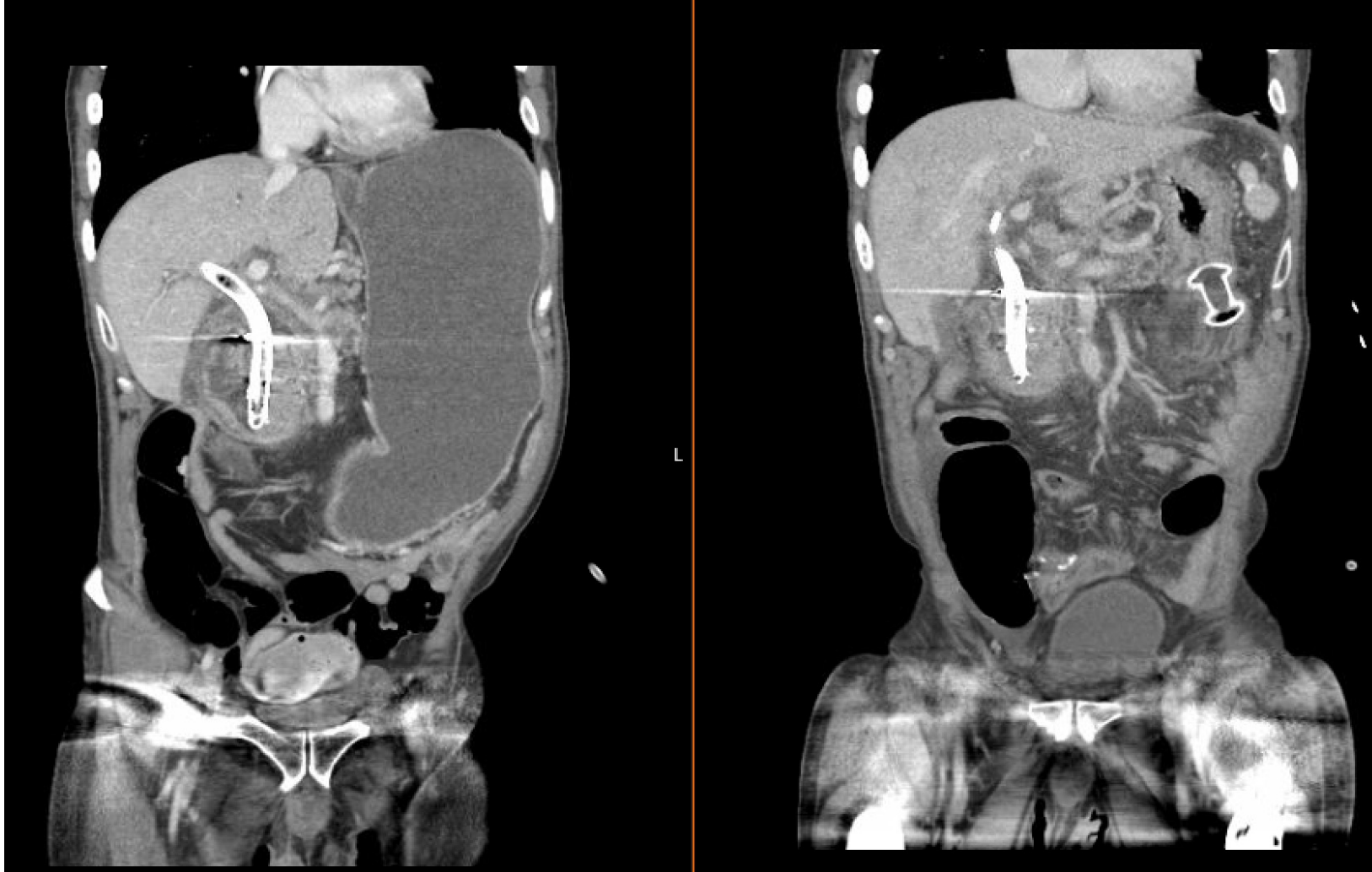
18



19



Endoscopy Gastrojejunostomy

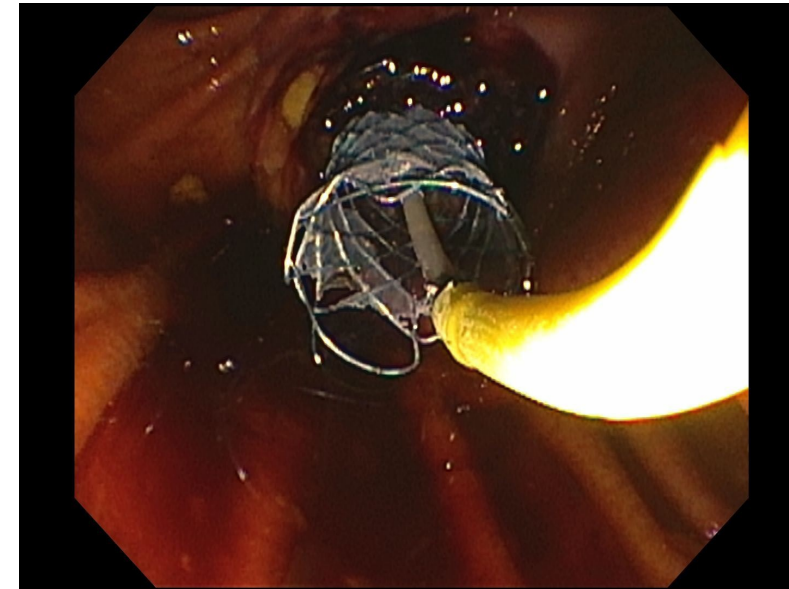
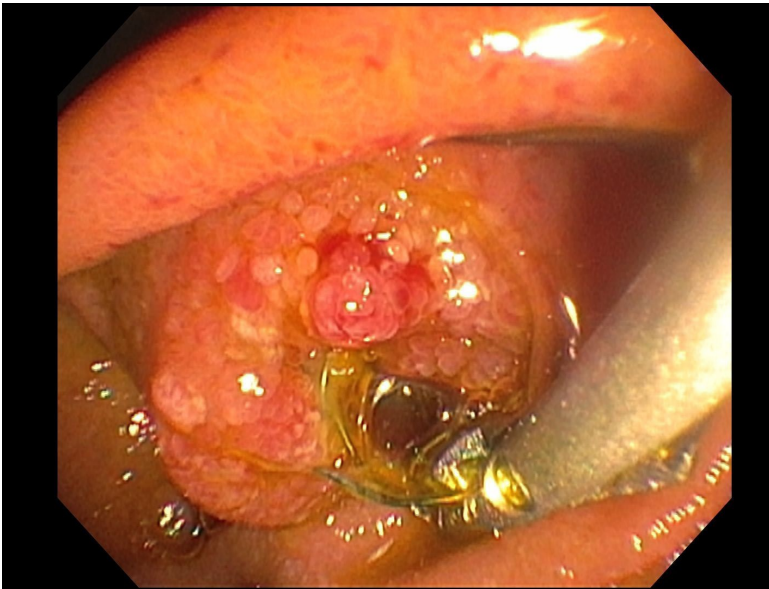


A coastal scene with waves in the foreground and houses on a cliff in the background. The text is overlaid on the image.

Migrated metal biliary stent which cannot
be removed easily

Migrated metal biliary stent

- 75 year old male had prior ERCP with sphincterotomy bleeding and fully covered biliary stent placed which stopped bleeding
- Repeat ERCP to remove stent revealed biliary stent had migrated up into bile duct – could not be removed

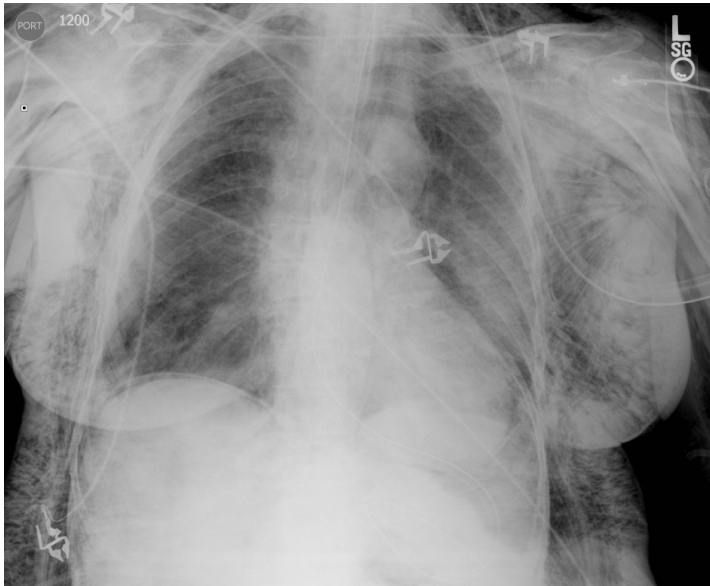


A coastal scene with waves in the foreground and houses on a cliff in the background. The image is overlaid with a semi-transparent blue filter. The text is centered in the middle of the image.

Pneumoperitoneum and Crepitance after ERCP

Facial and chest swelling during ERCP...

- 78 yo male undergoes ERCP with sphincterotomy for CBD stone
- End of case patient becomes stridorous and decreased O2 saturations
- Facial edema and crepitance then occur



Thank you!

